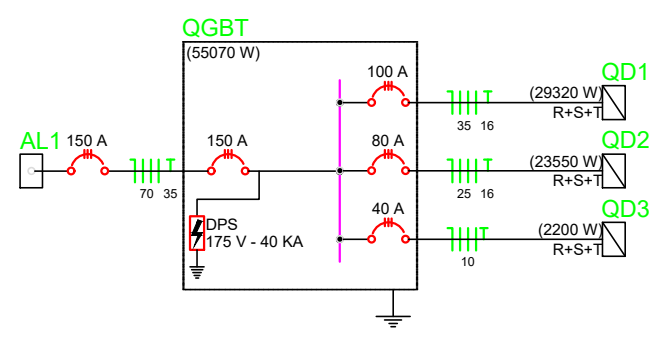
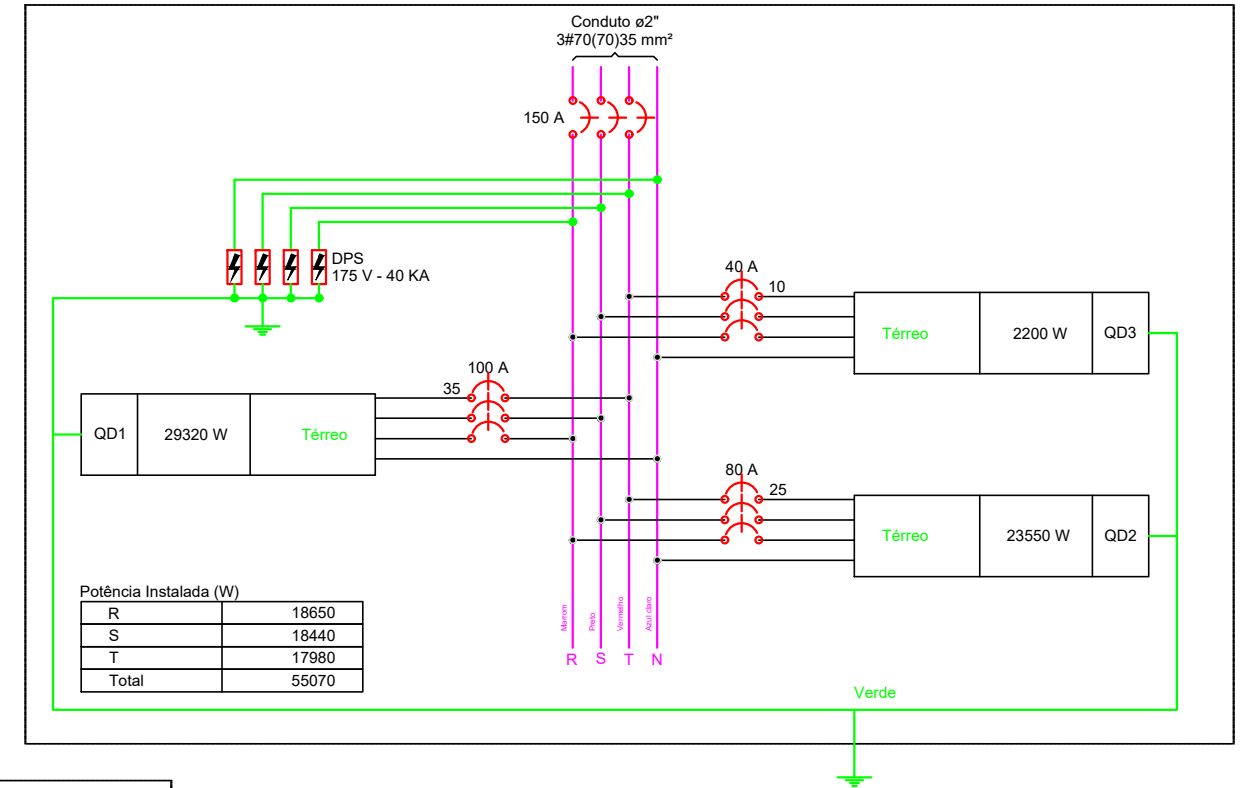


05

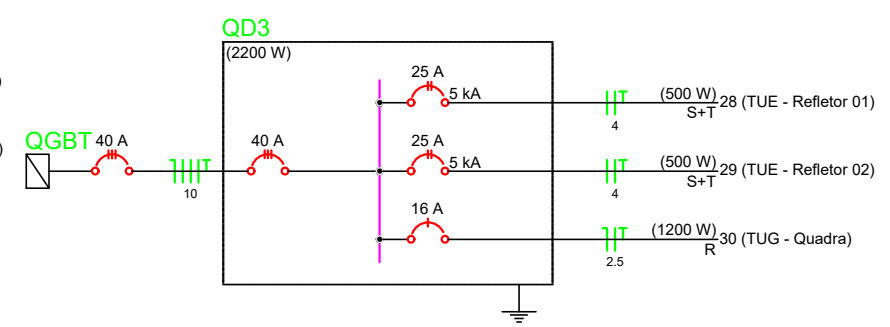
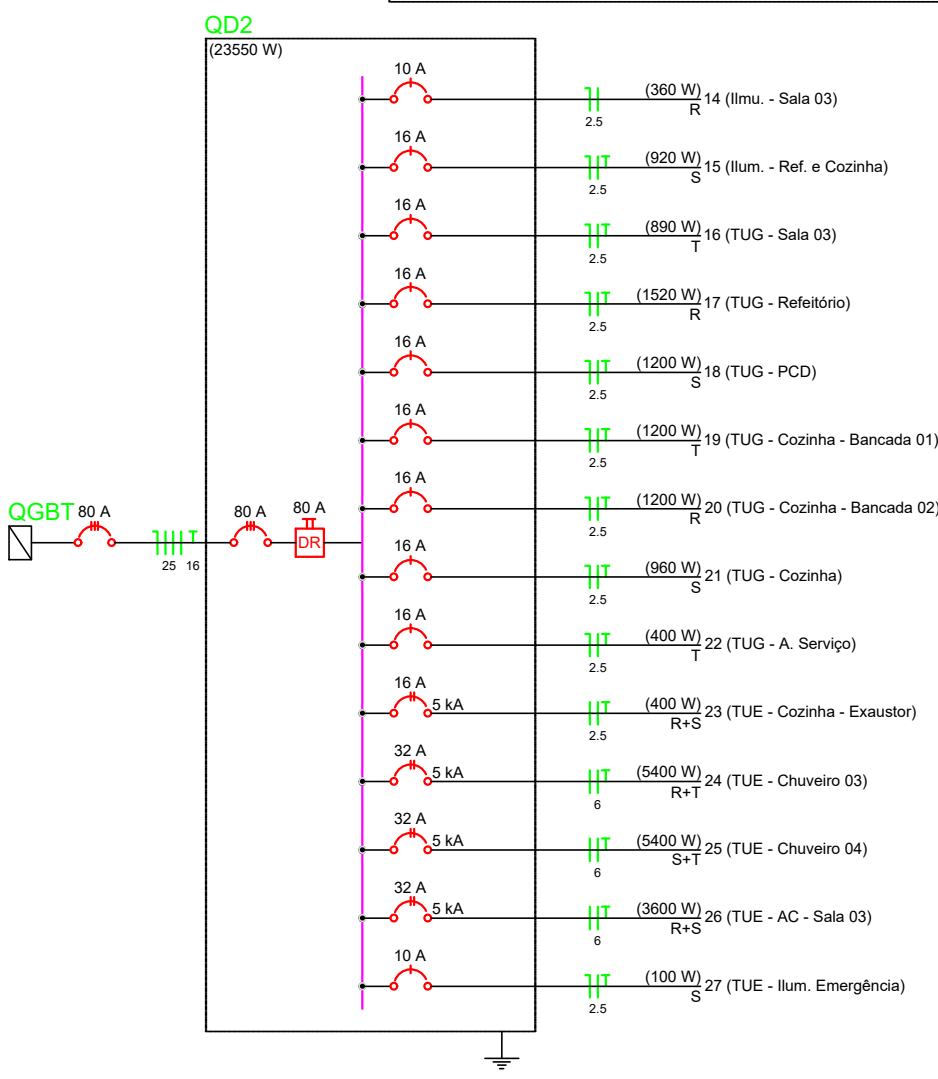
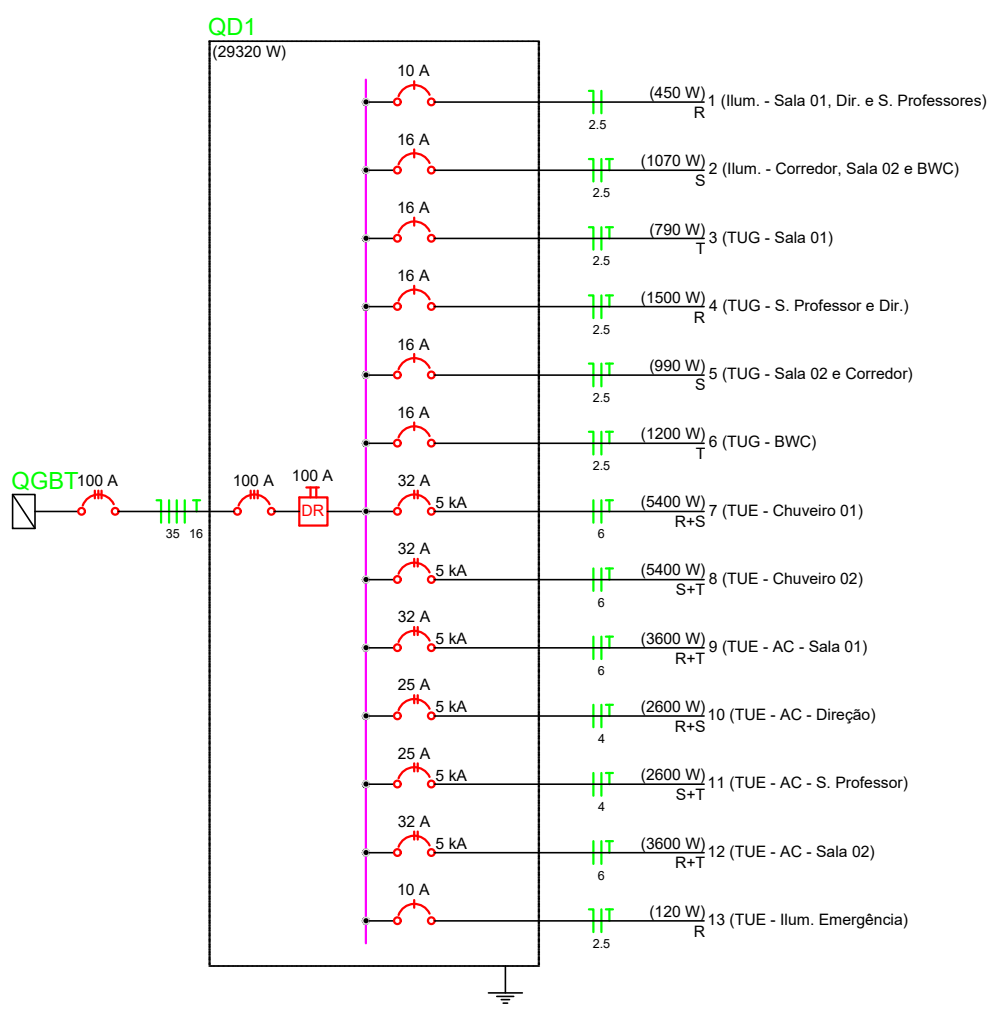
DIAGRAMA UNIFILAR E MULTIFILAR  
S/ESCALA



QGBT



Potência Instalada (W)	
R	18650
S	18440
T	17980
Total	55070



**PREFEITURA MUNICIPAL DE VÁRZEA GRANDE**

Av. Castelo Branco, Espaço Municipal, 2500 - Centro Sul, Várzea Grande/MT  
CEP 78125-700 - Fone/Fax: 65 3688 8000

LOCALIZAÇÃO: EMEB MARIA DE LOURDES TOLEDO AREIAS  
AV. PRINCIPAL, S/Nº, DISTRITO PRAIA GRANDE, VÁRZEA GRANDE - MT

ASSUNTO:  
DRENO  
AR CONDIÇÃOADO

DATA:  
FEV/2021

UNIDADE:  
Metro

ESCALA:  
S/ESC

PROJETO: REFORMA E AMPLIAÇÃO DA EMEB MARIA DE LOURDES TOLEDO AREIAS

AUTOR DO PROJETO:

ISRAEL ROSBERG COSTA  
ENGENHEIRO ELETRICISTA CREA-MT 048484

FOLHA:

**5/5**